



Bühler.

**Business Unit
Die Casting.**

Bühler - A 150-year success story.

Global leader with strong local roots.

- Technology partner for machines, systems and services for processing basic foods and for producing high-quality materials.
- Annual sales 2011: CHF 2,130 million.
- Number of employees: 8,800.
- Present in over 140 countries.
- Over 70 sales & service companies, more than 20 manufacturing sites and 24 service stations around the world.
- High innovation rate.
- 100 % family owned.



Bühler.

Divisions and Business Units.

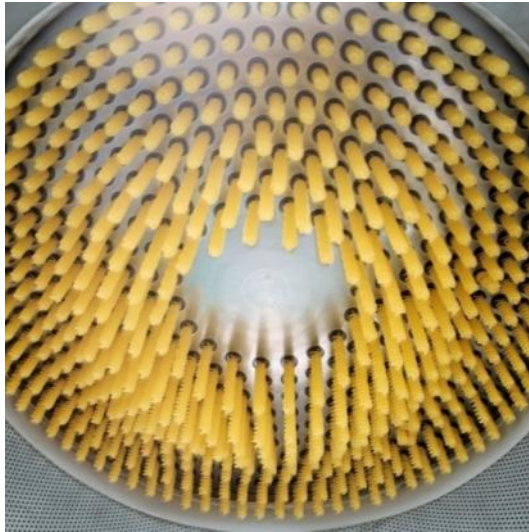
GRAIN PROCESSING

Grain Milling
Feed & Biomass
Sortex & Rice
Grain Logistics



FOOD PROCESSING

Pasta & Extruded Products
Chocolate, Cocoa & Coffee
Aeroglide
Nutrition Solutions



ADVANCED MATERIALS

Die Casting
Grinding & Dispersion
Thermal Processes
Nanotechnology



Bühler Die Casting.

Figures that speak for themselves.

7000

More than 7000 die casting systems supplied .

200

CHF 200 million annual sales generated by Bühler Die Casting.

1000

Almost 1000 die casting foundries rely on Bühler day in, day out.

1900

A total of 1900 patents granted and applied for, of which 100 in Die Casting.

25

Some 25% of all die cast components produced worldwide are made on Bühler systems.

5

Bühler invests 4 to 5% of total sales annually in research and development.

180

Every year, 180 cold-chamber die casting systems leave the production halls of Bühler. Global manufacturing capacities over 250 u /year.

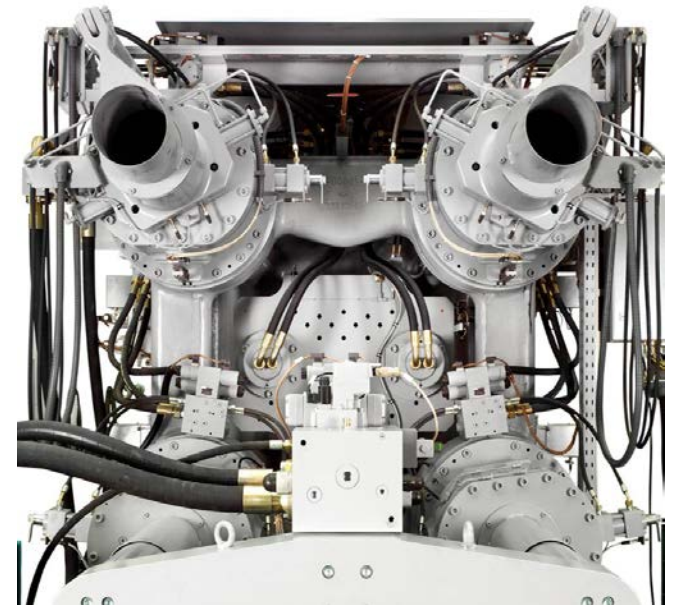
85

85 years of experience in the design and construction of die casting systems.

Bühler Die Casting.

Milestones of Die Casting Technology.

- 2012 Brescia Presse is acquired. Ecoline Multistep.
- 2011 Lost Core Technology.
- 2010 Ecoline is introduced on the market.
- 2008 Joint venture with JSW, Japan.
- 2007 Carat, 2-platen technology
- 2006 IdraPrince Holland, USA is acquired.
- 1998 Start of manufacturing in the USA
- 1996 Second generation of the SC series.
- 1994 Large-scale machines with SC technology.
- 1989 SC series with first digital real-time control of the casting process in the world.
- 1984 Datasess/Processtrol control and monitoring system.
- 1974 Patented shot system, Parashot.
- 1962 Machines with electronic controls.
- 1927 First die casting machine.

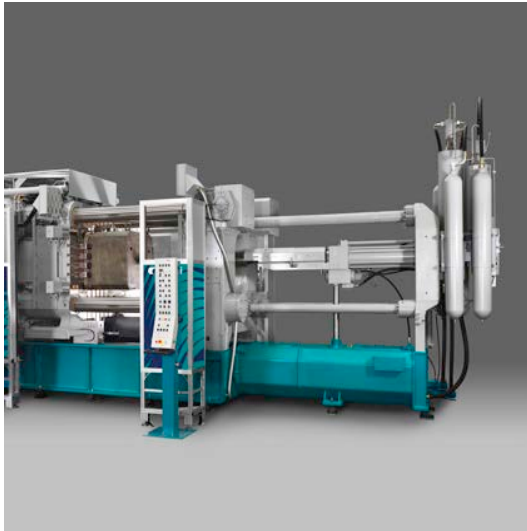


Bühler Die Casting.

A Well-Coordinated Portfolio.

MACHINES / SYSTEMS

Carat
Evolution
Ecoline
Automation Solutions



SERVICES

Basic Services
Advanced Services
Individual Services



PROCESS TECHNOLOGY

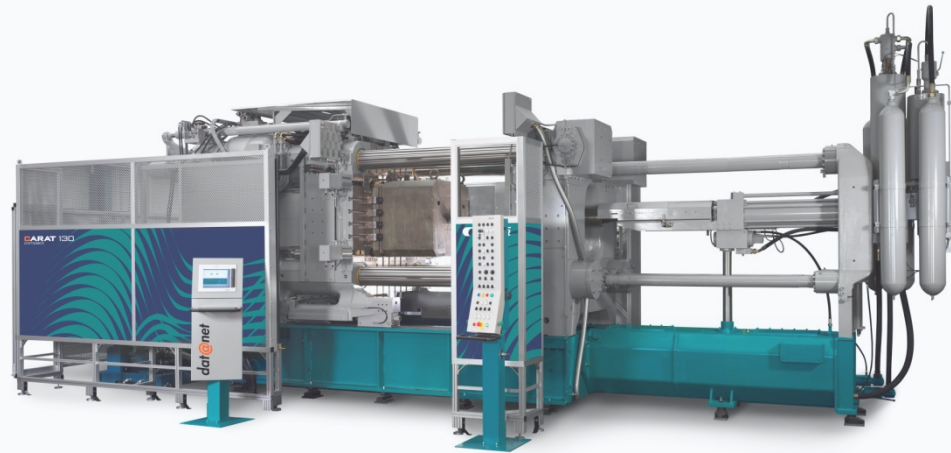
Structural
Lost Core
Combal



Bühler Die Casting Machines.

The right technology for every application.

Locking Force / Part Size



Carat

- 10'500 - 44'000 kN.
- 13 sizes.
- Lean, compact, extended.
- 150 units (2012).

Ecoline

- 3'400 - 8'400 kN.
- 4 sizes.
- 100 units (2012).



Evolution

- 2'600 - 9'000 kN.
- 7 sizes.
- Lean, compact, extended.
- 2000 units (2012).

Part Complexity / Flexibility of Production

Bühler Die Casting.

Global partner - local and professional.

Holland MI [USA]

- 80 Employees
- Factory, Training, R&D Engineering, Customer Service, Technology Center

Uzwil [CH]

- 160 Employees
- Factory, Engineering, R&D, Training, Customer Service, Technology Center

Bangalore [IN]

- 20 Employees
- Factory, Engineering, Training, Customer Service, Technology Center

Hiroshima [JP]

- 10 Employees
- Factory, Engineering, Training, Customer Service, Technology Application Center.

Wuxi [CN]

- 100 Employees
- Factory, Engineering, Training, Customer Service, Technology Application

Bühler Die Casting.

Always there for you.

- **Reliable Partner.**
Stable family company – financially sound.
- **Innovative and Experienced.**
We have been the trendsetters in die casting for over 80 years.
- **A Single Source for Systems Solutions.**
Products and services for the entire value chain.
- **On-Site Expertise – Worldwide.**
With our own sales and service organization.

